

A

B

B

B

1

2

2

3

3

4

4

5

5

6

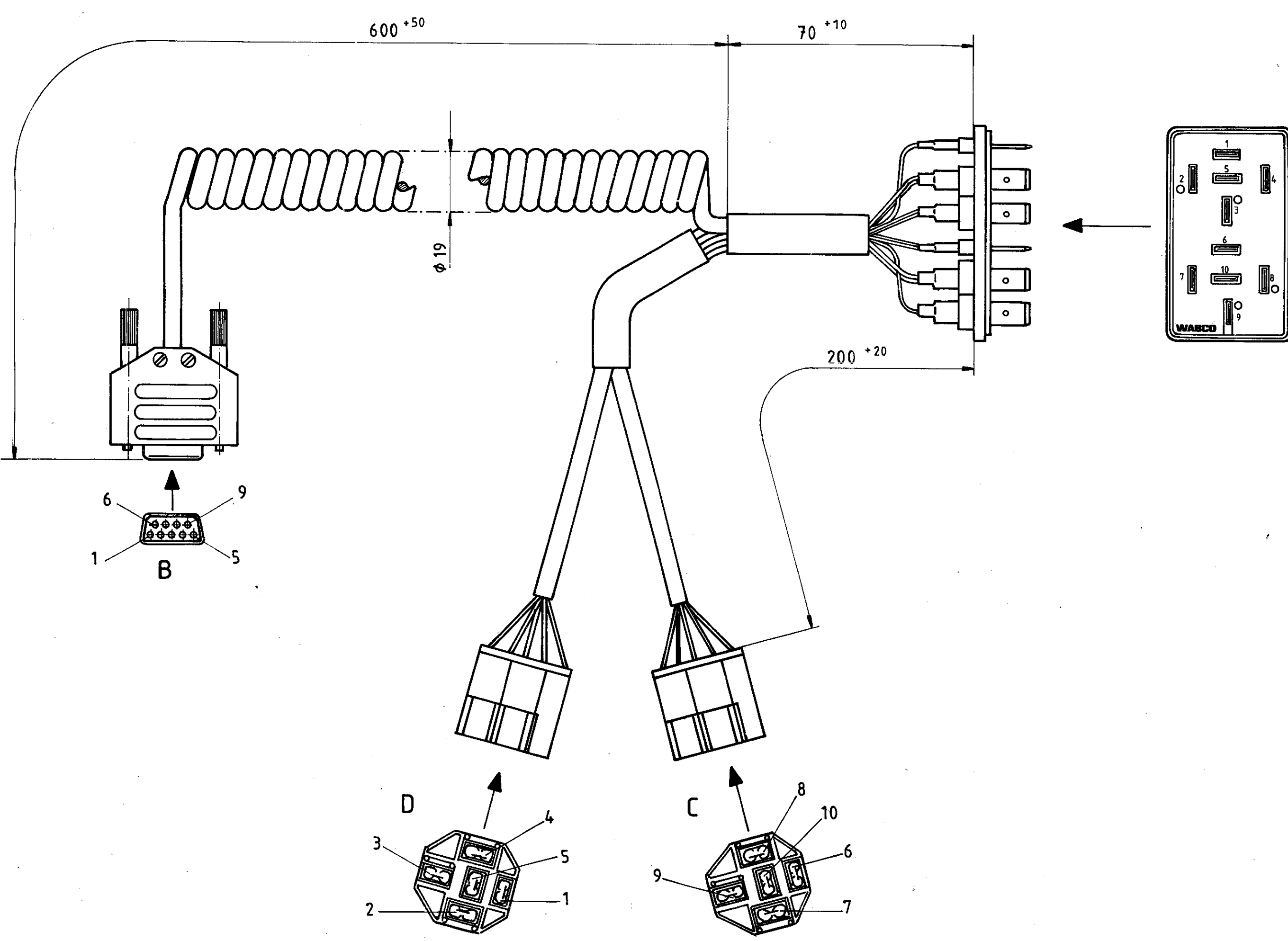
6

7

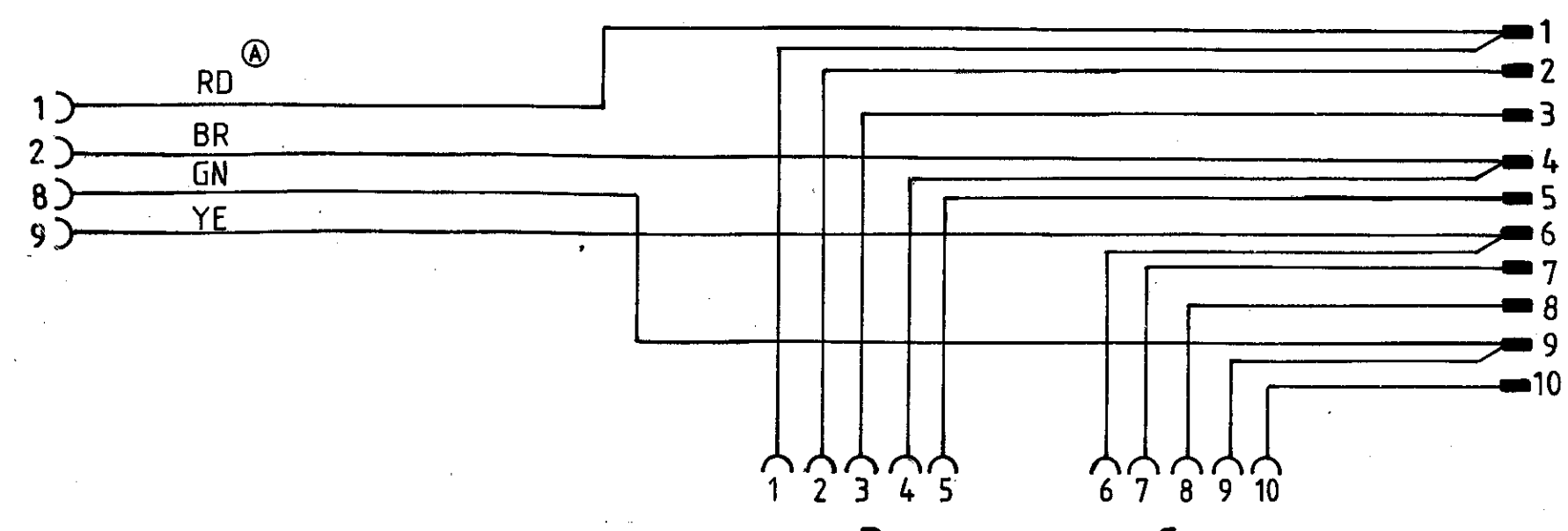
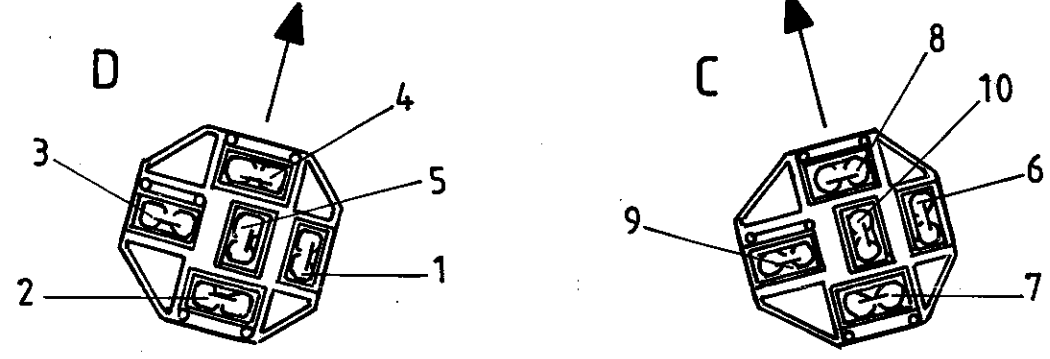
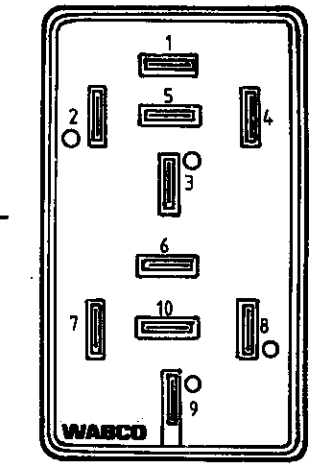
7

8

8



A



VOLTAGE
SPANNUNG
VOLTAGE
VOLTAGGIO

0 24V ±20%

CURRENT RANGE OF APPLICATION
STROM ANWENDBEREICH
PLAGE DU COURANT EN UTILISATION
CAMPO DI CORRENTE DI APPLICAZIONE

0 3,5A

STORAGE TEMPERATURE FROM
LAGERTEMPERATUR VON
TEMPERATURE DE MAGASINAGE DE
TEMPERATURA DELL'MAGASINAMENTO DA

-20 ... +60°C

THERMAL RANGE OF APPLICATION
THERM. ANWENDBEREICH
PLAGE DE TEMPERATURE EN UTILISATION
CAMPO TERMICO DE APPLICAZIONE

0 ... 60°C

PROTECTION TYPE
SCHUTZART
MODE DE PROTECTION
MODO DI PROTEZIONE

IP00 DIN40050

Non è permesso consegnare a terzi o riprodurre questo documento, né utilizzarne il contenuto o renderlo comunque noto a terzi senza autorizzazione esplicita. Ogni infrazione costituirà un evidente abuso e comporterà il risarcimento. Copying of this document, and giving it to others and the use or communication of the contents thereof, are forbidden without express authority. Contravention of this restriction will constitute an evident abuse and result in a liability to the payment of damages. All rights are reserved and the event of the grant of a patent or the registration of an utility model or design, this drawing is the subject of copyright.

Toute communication ou reproduction de ce document, toute exploitation ou communication de son contenu sans autorisation expresse. Tout manquement à cette règle et exposition au versement de dommages et intérêts. Tous droits réservés, notamment en matière de brevets et de modèles. Weitergabe sowie Vervielfältigung dieser Unterlage, Verwertung und Mitteilung ihres Inhalts sind ausdrücklich untersagt. Zuwiderhandlungen werden strafrechtlich verfolgt und die Erben, Rechtsnachfolger und Gebrauchsmuster-Eintragungen vorbehalten.

FURTHER TECHNICAL DATA SEE		L		COPYRIGHT BY WABCO		WABCO	CONNECTION ADAPT. ANSCHLUSSADAPTER CONNECTION CONNETTORE	VARIO C
IDENTIFICATION No.:		K		DATE	SIGNATURE			
CODE FOR DOCUMENT: 605 SHEET: TO		J		91.05.02	<i>[Signature]</i>			
GENERAL TOLERANCES		H		91.05.02	<i>[Signature]</i>			
CLASS	RANGE OF NOMINAL DIMENSIONS (± mm)				A	STANDARDIZATION	PRODUCT IDENTIFICATION NO.	CODE FOR DOCUMENT SHEET
	1)	≤ 50	> 50 ≤ 180	> 180 ≤ 400				
I	0,5	1	1,5	2	± 3°	MASS	SCALE	446 300 318 0
II	*	1	2	3		0,330	1:1	
III		2	3,5	5		6,5	SIZE	T.R.I.
TAPPED HOLES ACC. ISO 4039 / JED-152				51396	1x A	93.03.01	CODE F. PROD. GROUP CODE FOR SHAPE REPLACEMENT FOR	
1) TOLERANCE CLASS APPLIED CROSSMARKED				DCN-No.	REV.	DATE	A2	142